

## The Map Window

All tutorial data is being used from <http://gisdata.eddmaps.org/apps/demo>

To follow along with the tutorials, feel free to use that web address to gain access to the online demo.

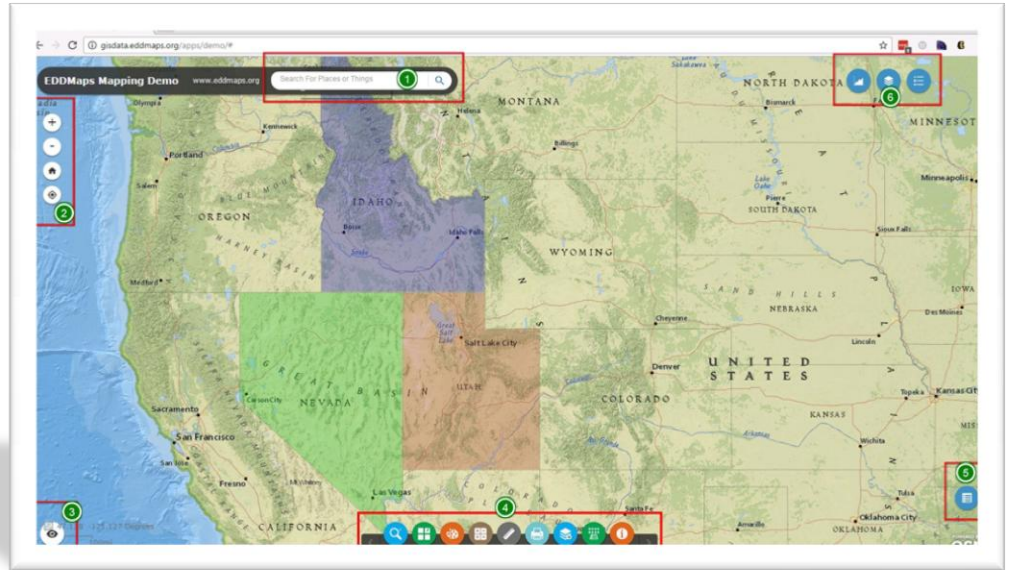
The information in the demo map is being provided for demonstration purposes only and does not constitute real data pertaining to noxious weeds. The data cannot be considered reliable and cannot be used for on the ground weed management decisions.

ALL RIGHTS RESERVED | EDDMAPS.ORG

**EDD** **MapS**

Early Detection & Distribution Mapping System

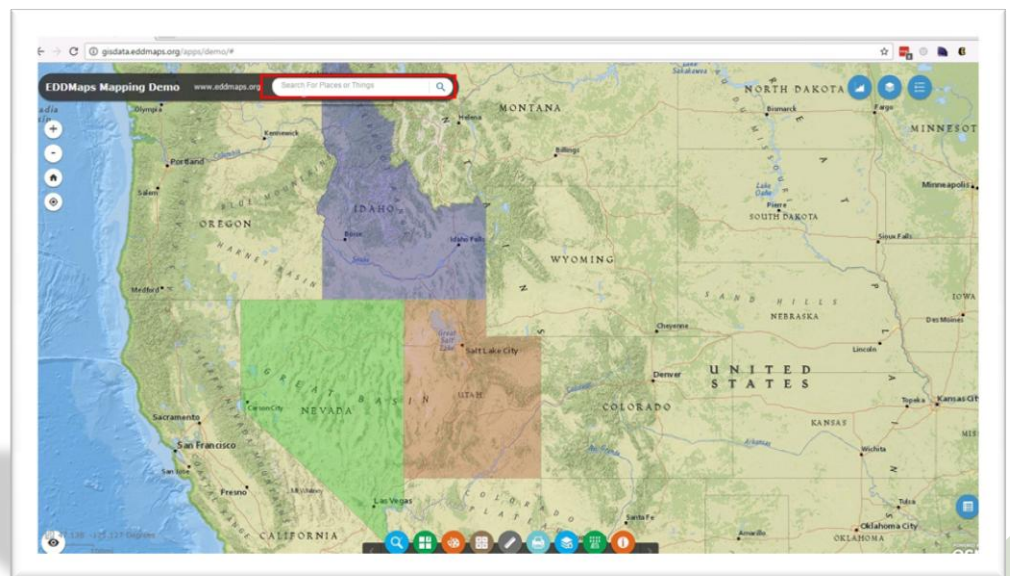
## Map Window



These are the 6 basic parts that make up the Map Window.

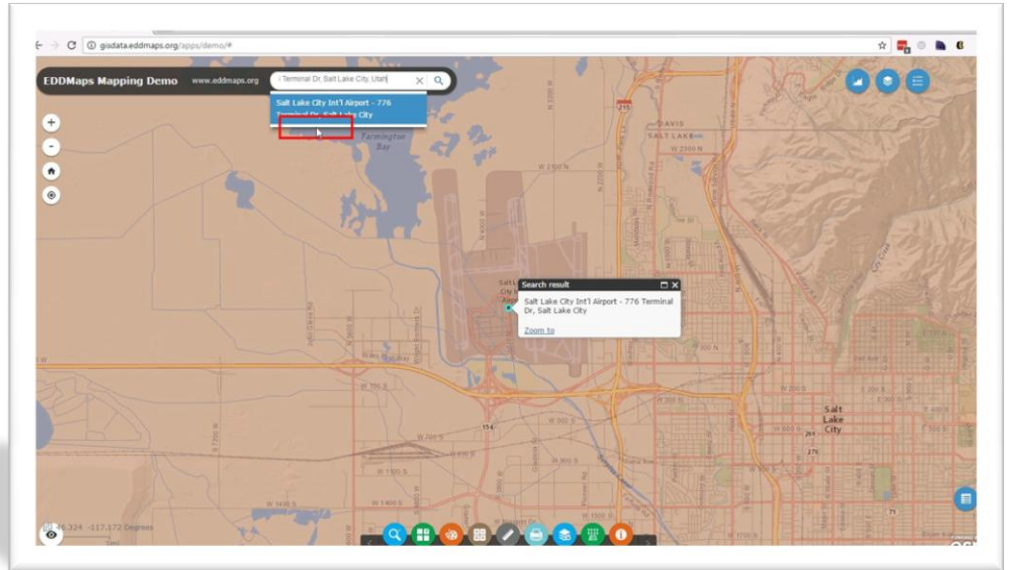
- 1- Search bar
- 2- Navigational Toolbar
- 3- Overview Map Panel
- 4- Bottom Toolbar
- 5- Attribute Table
- 6- Top Toolbar

## Search Toolbar



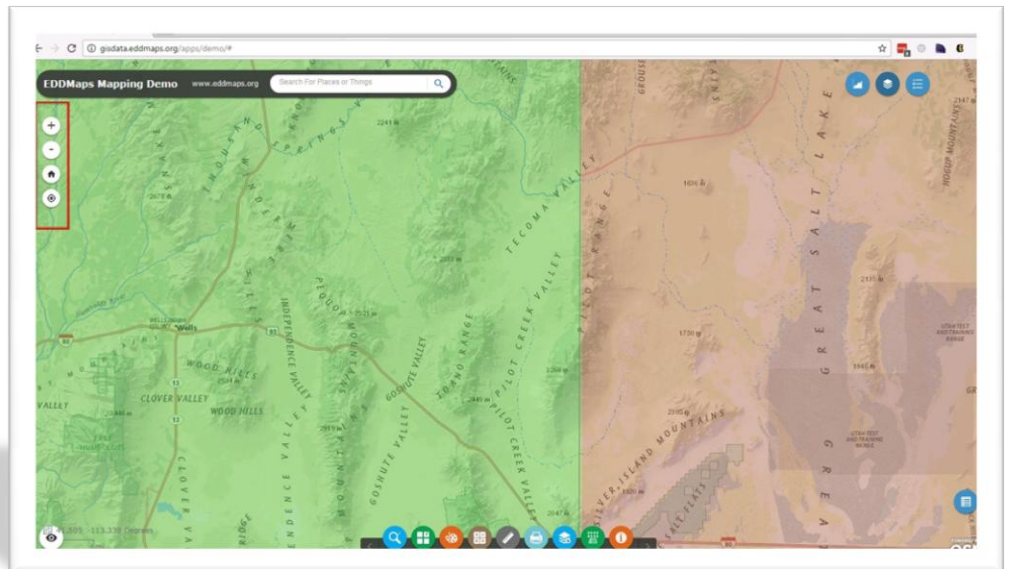
You can type in direct places (cities, states) and things (airports, restaurants) here and search for them in the map.

## Search bar



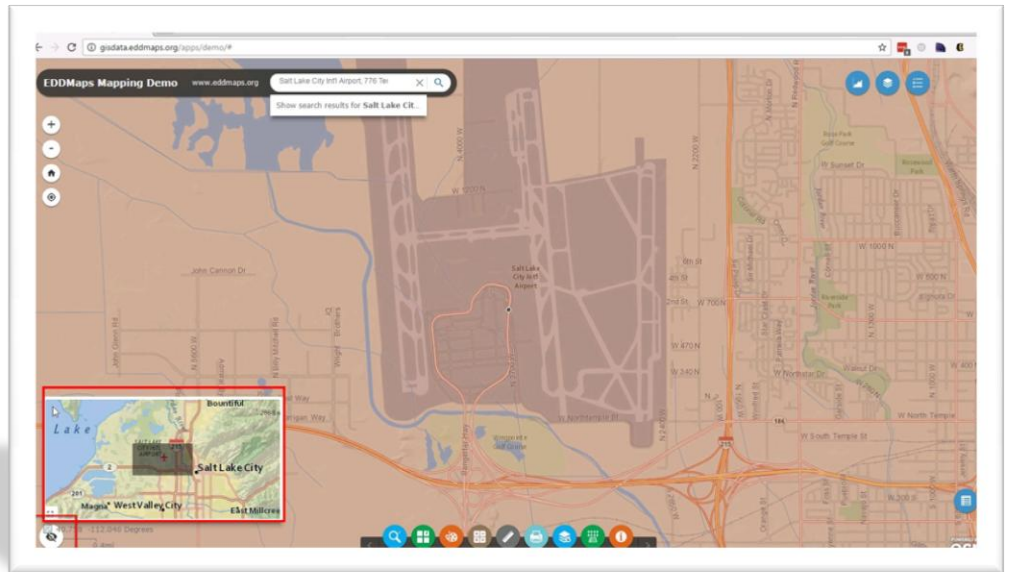
*Salt Lake City airport search results*

## Navigational Tools



*Use these tools to zoom in/out and to go back to the default zoom state.*

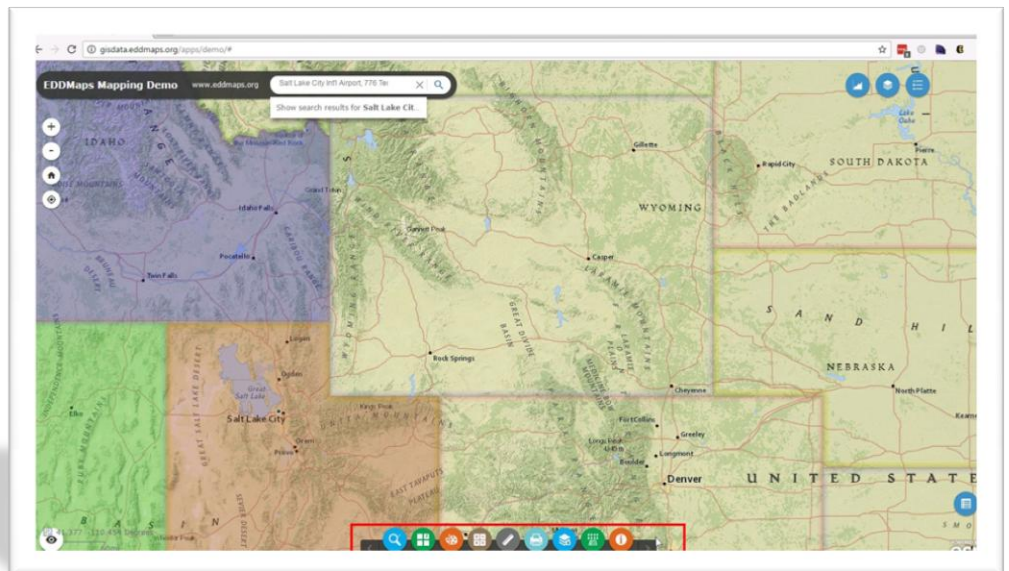
## Overview Window



*By clicking the overview tool the overview window opens up. This gives the overview of the location your map is currently zoomed to.*

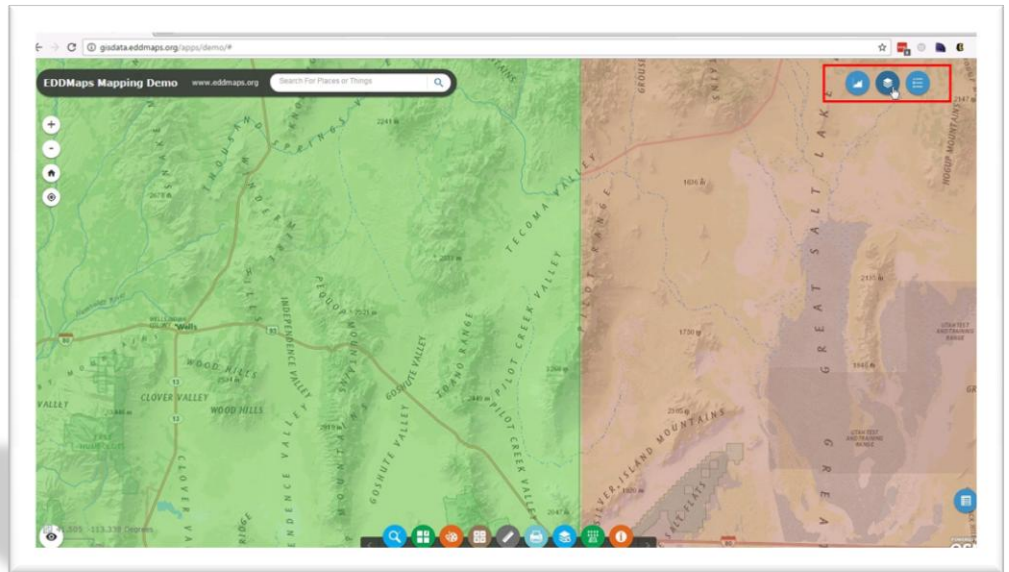
*Click on the tool to close the window.*

## Toolbar



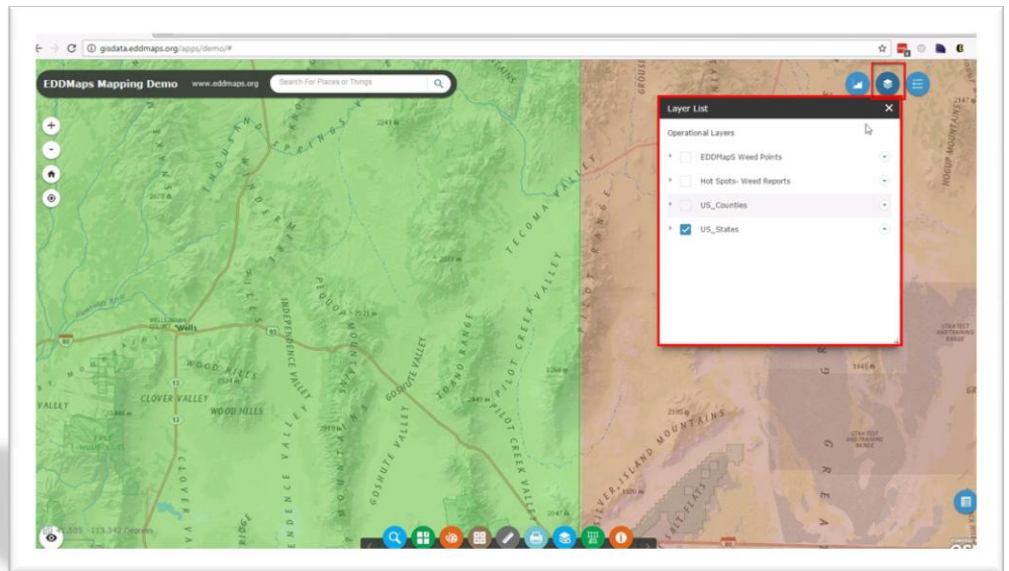
*The Toolbar contains all of the individual tools you will need and use to interact with your map.*

## Top Toolbar



*The Top Toolbar contains your map legend, your map layers and your chart tools.*

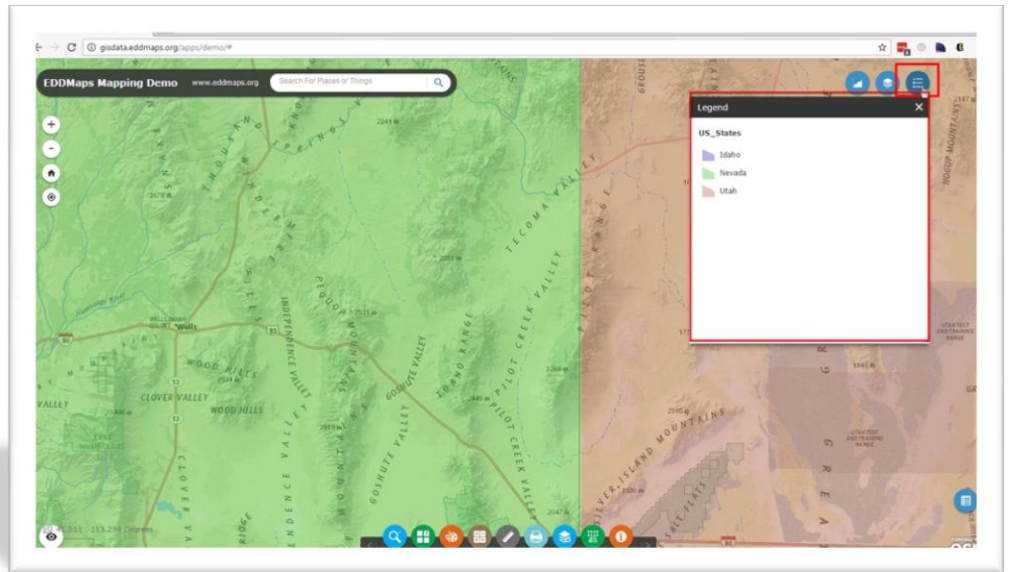
## Layer List



*This tool opens the layer list panel and lists all of the map layers.*

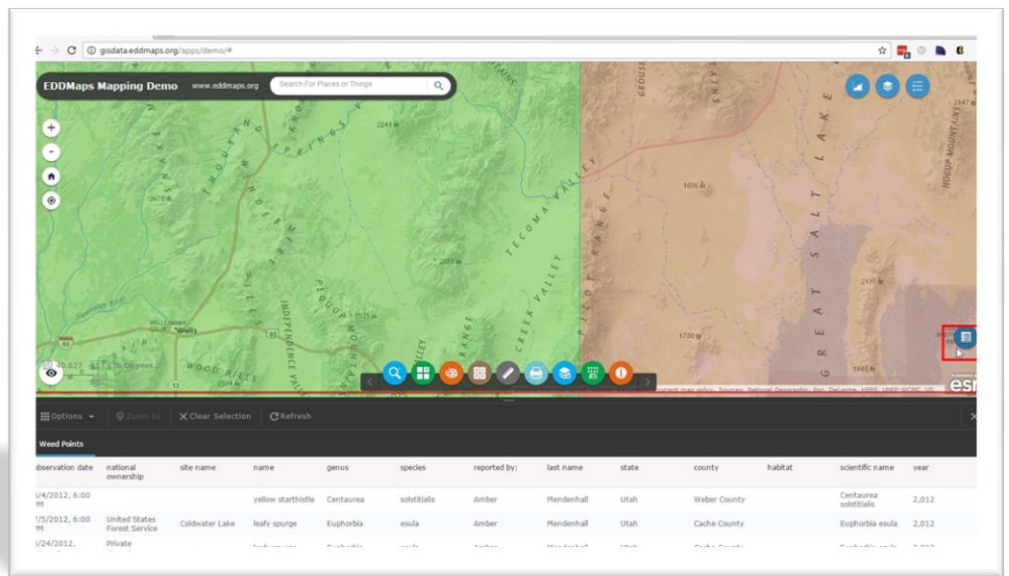
*You can turn them on/off, change the order and change the transparency of the features.*

## Map Legend



*This tool opens the map legend panel and shows you the current map legend for the features in the existing map.*

## Attribute Table



*The Attribute Table tool opens the panel underneath the map window.*

*You can sort your data, filter, turn fields on/off, and even export the data to excel.*