

Changing The Basemap

All tutorial data is being used from <http://gisdata.eddmaps.org/apps/demo>

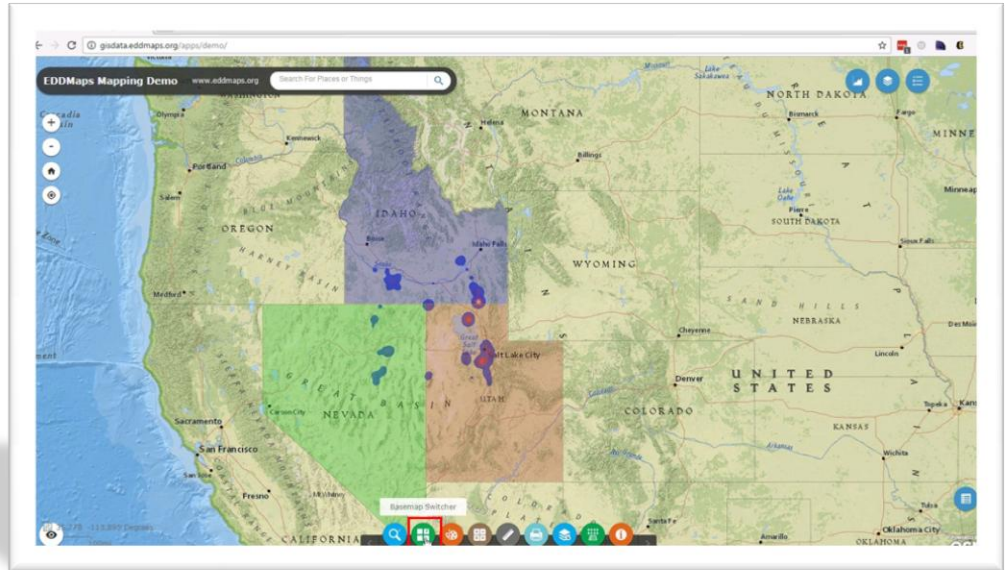
To follow along with the tutorials, feel free to use that web address to gain access to the online demo.

The information in the demo map is being provided for demonstration purposes only and does not constitute real data pertaining to noxious weeds. The data cannot be considered reliable and cannot be used for on the ground weed management decisions.

ALL RIGHTS RESERVED | EDDMAPS.ORG

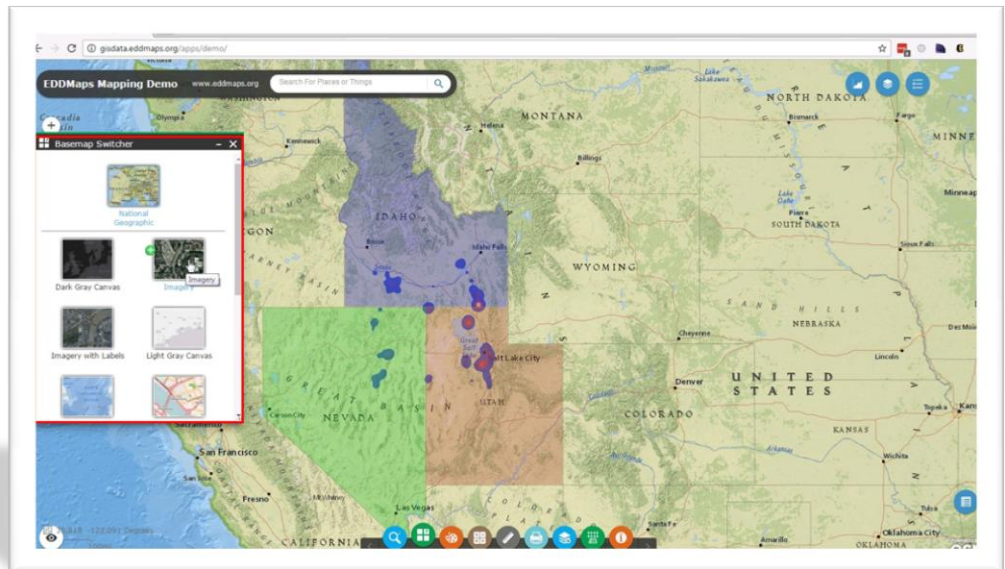


Basemap Tool



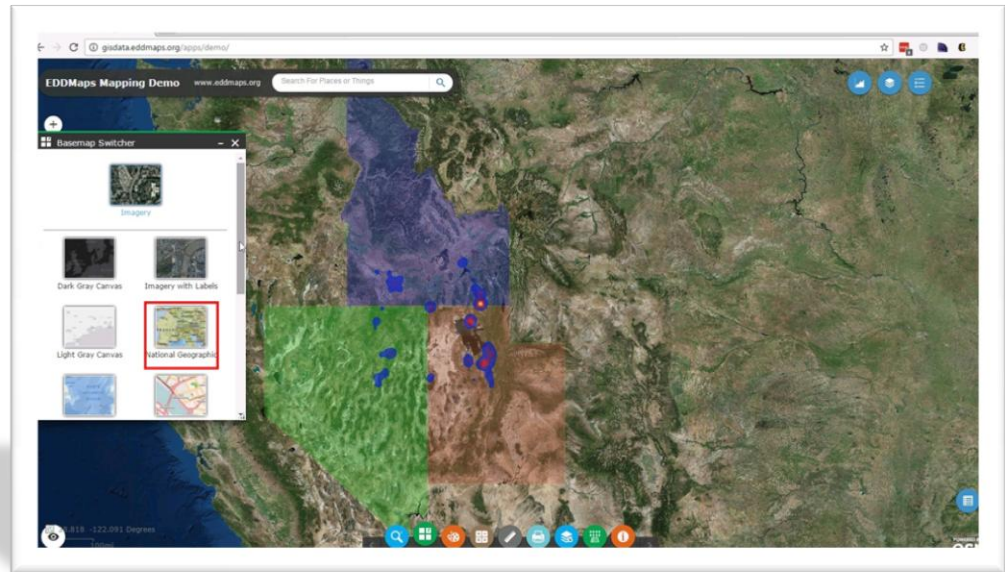
You can change the basemap in your map viewer by clicking on the "Basemap Switcher" tool

Basemap Panel



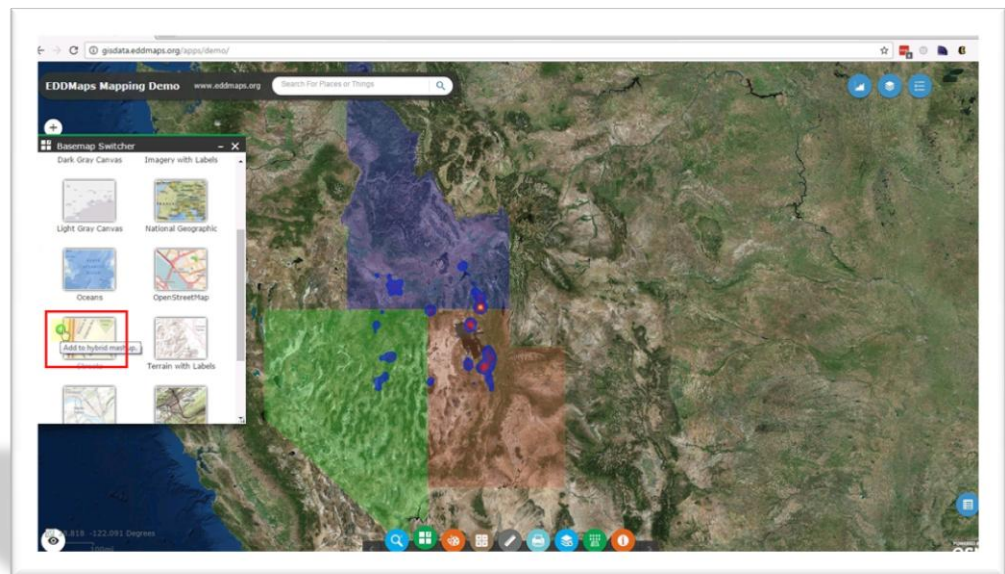
The Basemap Panel opens and you are given multiple choices for selecting a different basemap.

Basemap Panel



You can select a new one by clicking on the basemap icon. It automatically redraws the basemap with the new background.

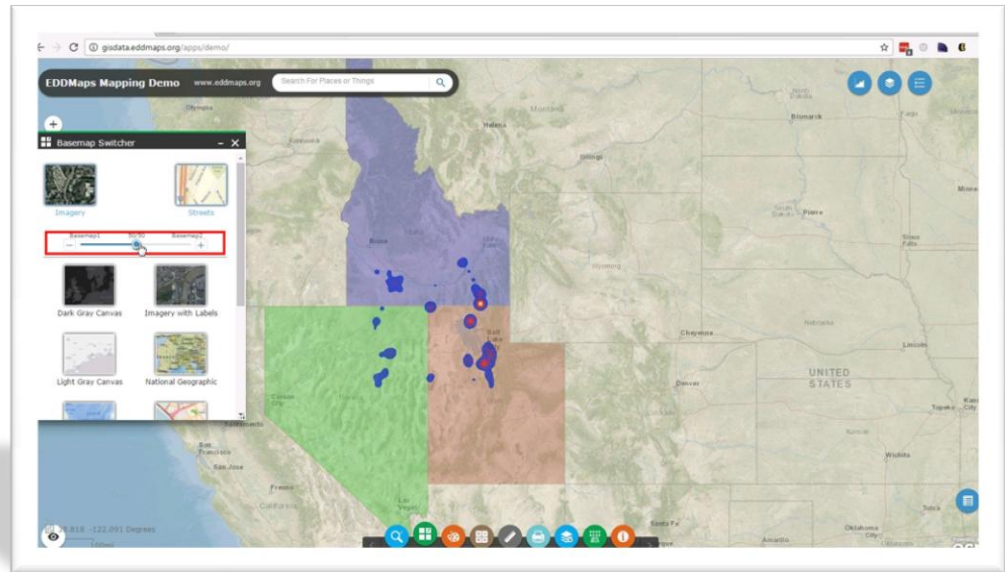
Hybrids



You also have the option of creating a hybrid mashup which will combine 2 basemaps into one map background.

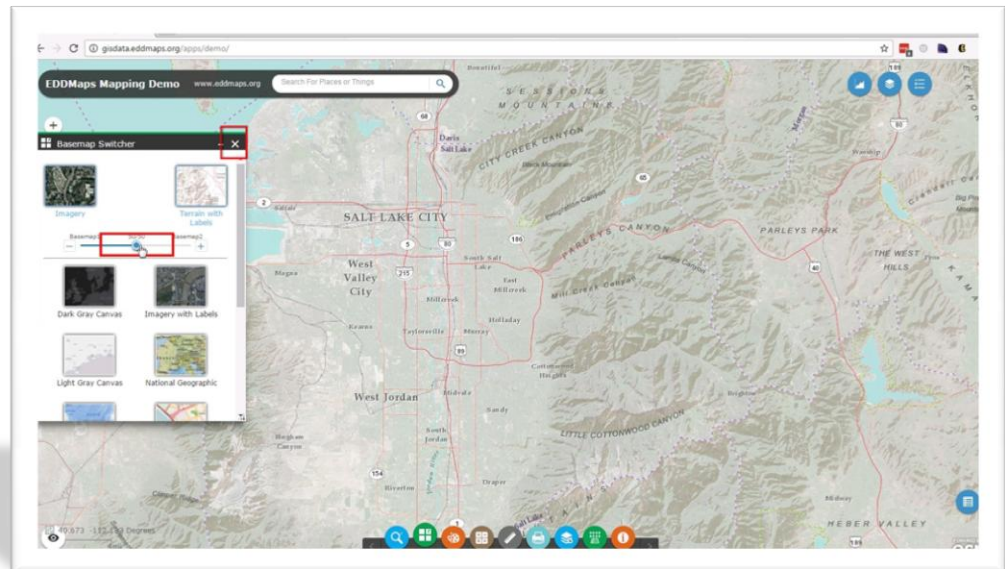
Instead of clicking on the map icon, click on the green plus sign to have the basemap added to the existing one.

Hybrid



Using the slider, you can choose which map shows up darker. Slide it back and forth to see the difference.

Hybrid



You can add any of the basemaps to the background.

When you are finished, close the Basemap Switcher panel.