

Adding Map Services

All tutorial data is being used from <http://gisdata.eddmaps.org/apps/demo>

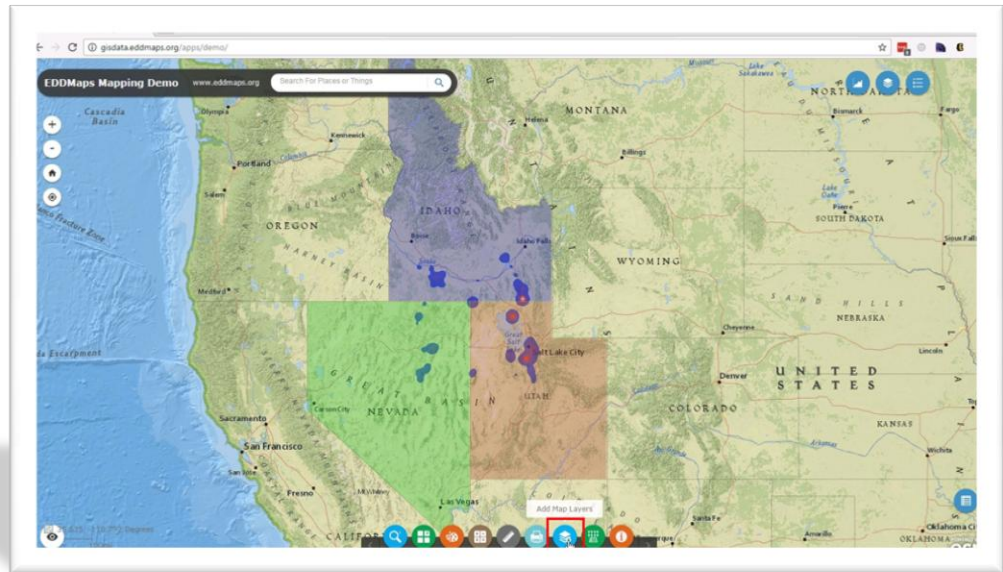
To follow along with the tutorials, feel free to use that web address to gain access to the online demo.

The information in the demo map is being provided for demonstration purposes only and does not constitute real data pertaining to noxious weeds. The data cannot be considered reliable and cannot be used for on the ground weed management decisions.

ALL RIGHTS RESERVED | EDDMAPS.ORG

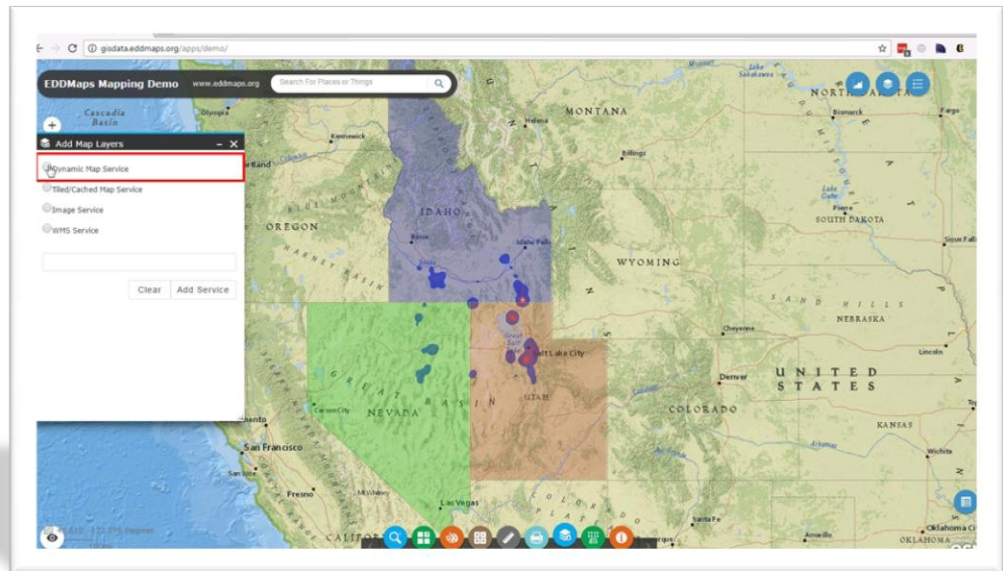


Add a Map Service



To add your own existing map services to the online GIS map click on the "Add Map Layer" tool.

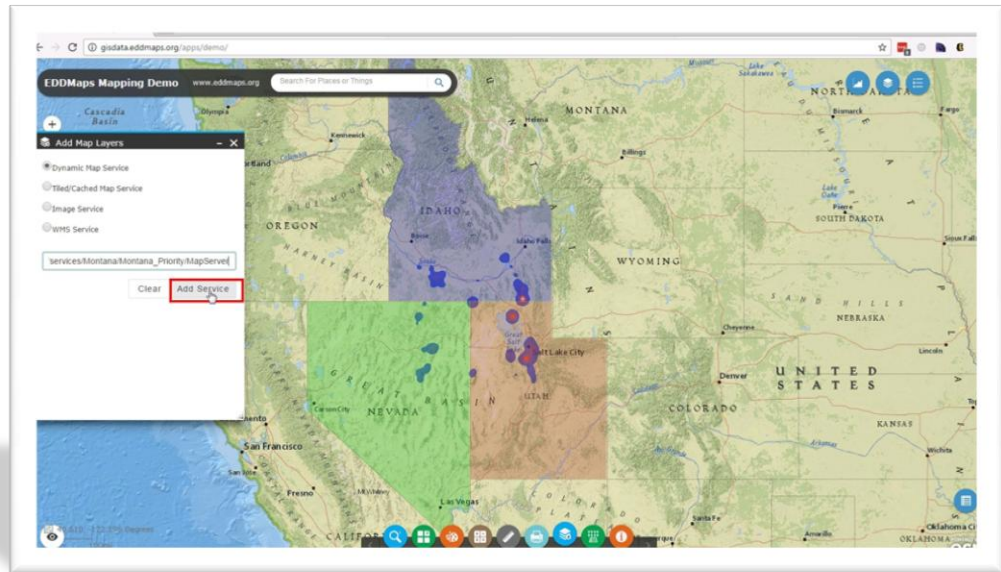
Add Map Layers



The Map Layer panel opens and gives you 4 types of services supported for adding data to the map.

For this tutorial we will be adding a Dynamic Map Service.

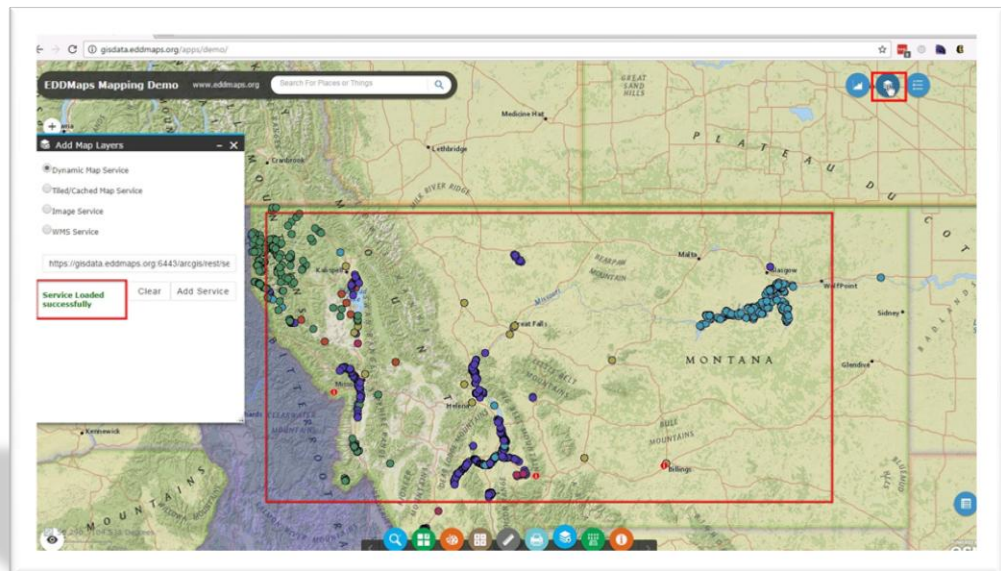
*Enter
URL*



Enter in the URL of the map service you want to add and click on "Add Service".

You can obtain the URL of any map service by contacting the system administrator or reading the metadata.

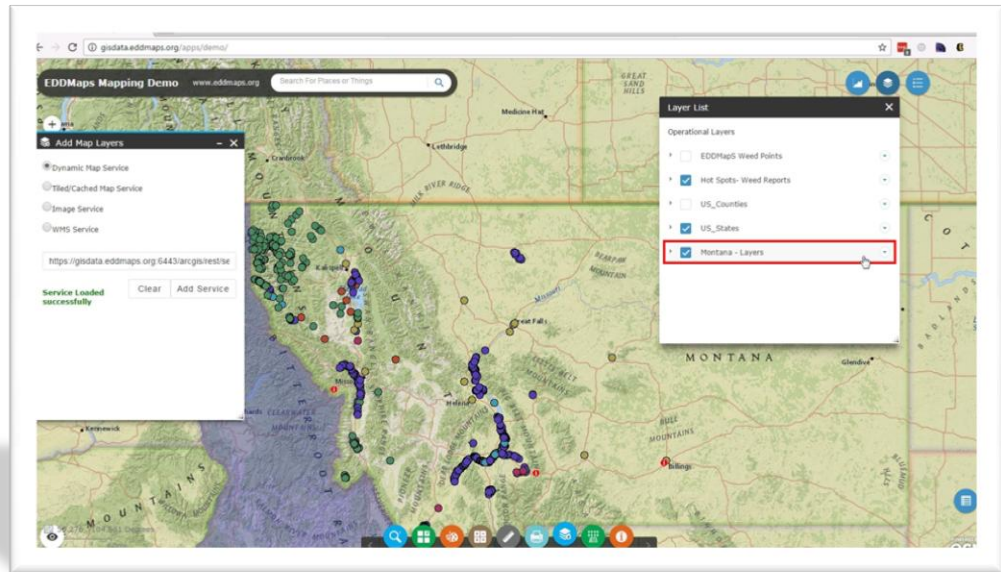
*Adding
A Map
Service*



Once it's been added you will see a Success Message and the map layer will draw on the map.

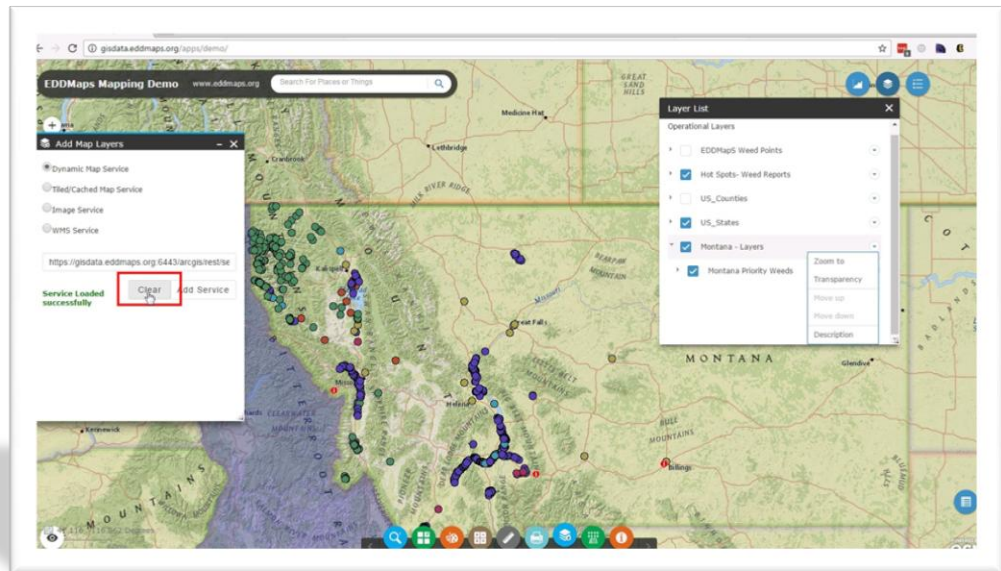
Select the map layers tool in the top toolbar to see that the layer has been added to the map properly.

Adding A Map Layer



As you can see our layer has been added to the Layer List successfully.

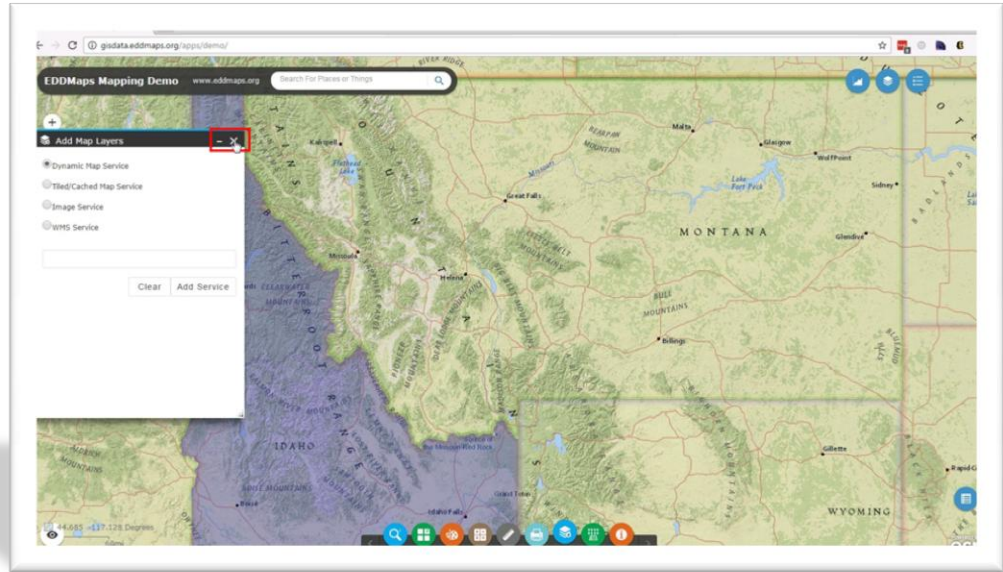
Clear Map



You can clear the Map Layers by clicking on the "Clear" button.

You can then add an additional map service and can add as many as you need to your map. The map services are only stored for this single session and once you close/refresh the browser, they disappear.

*Close
Map
Layers*



When you are done adding Map Layers close out the Map Layers panel by clicking on the top "X".