

Accessing The Map

All tutorial data is being used from <http://gisdata.eddmaps.org/apps/demo>

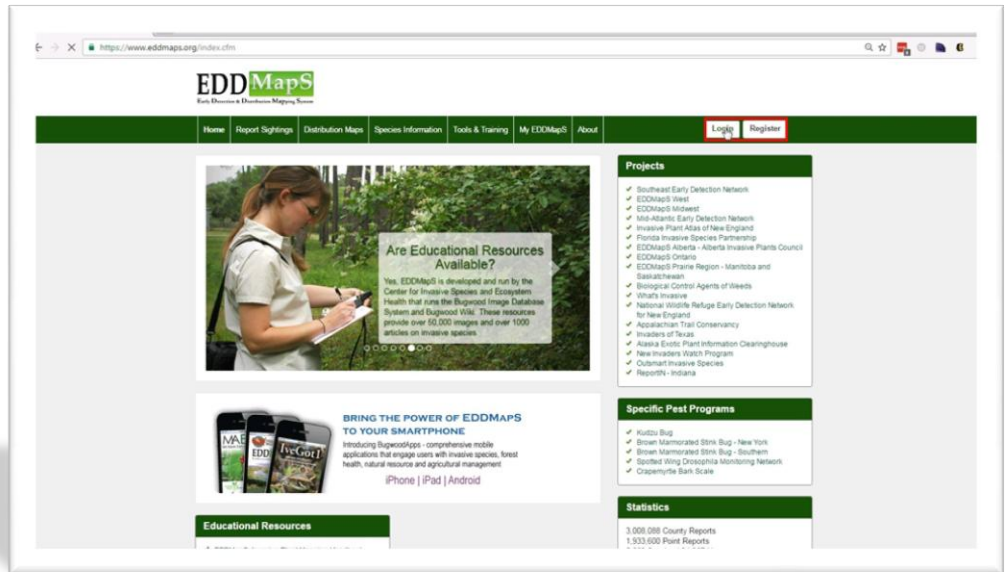
To follow along with the tutorials, feel free to use that web address to gain access to the online demo.

The information in the demo map is being provided for demonstration purposes only and does not constitute real data pertaining to noxious weeds. The data cannot be considered reliable and cannot be used for on the ground weed management decisions.

ALL RIGHTS RESERVED | EDDMAPS.ORG



Accessing the Maps

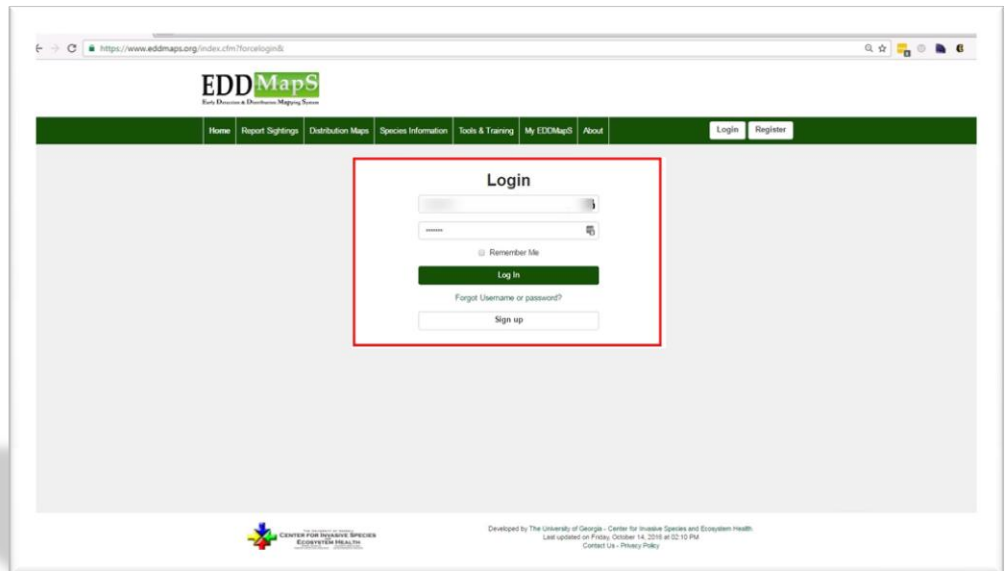


To access the EDDMapS GIS sites use your EDDMapS user name and password.

Go to www.eddmaps.org and log in to your account in the top toolbar.

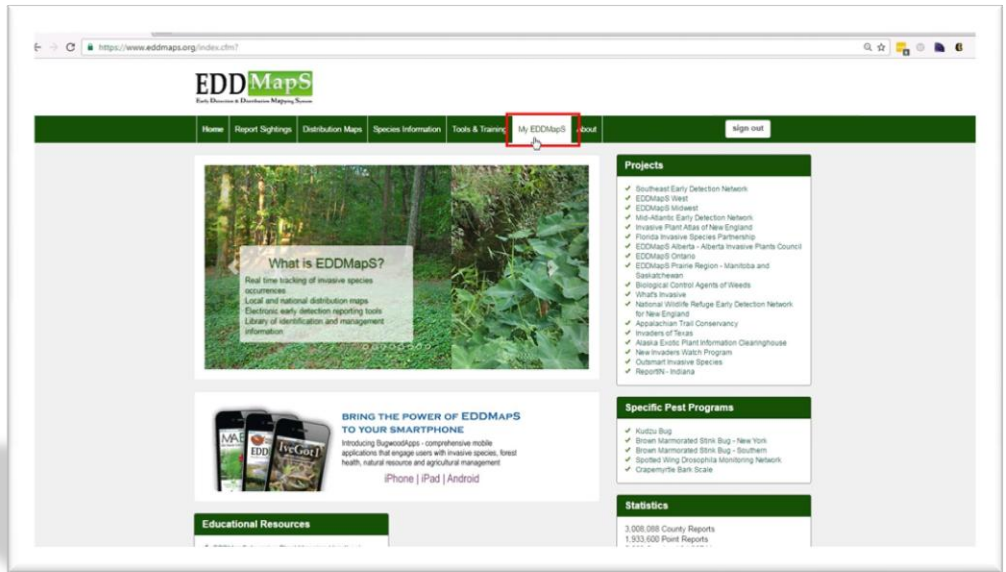
All project maps are managed by the individual project managers and access to the site has to be obtained through them.

Log On



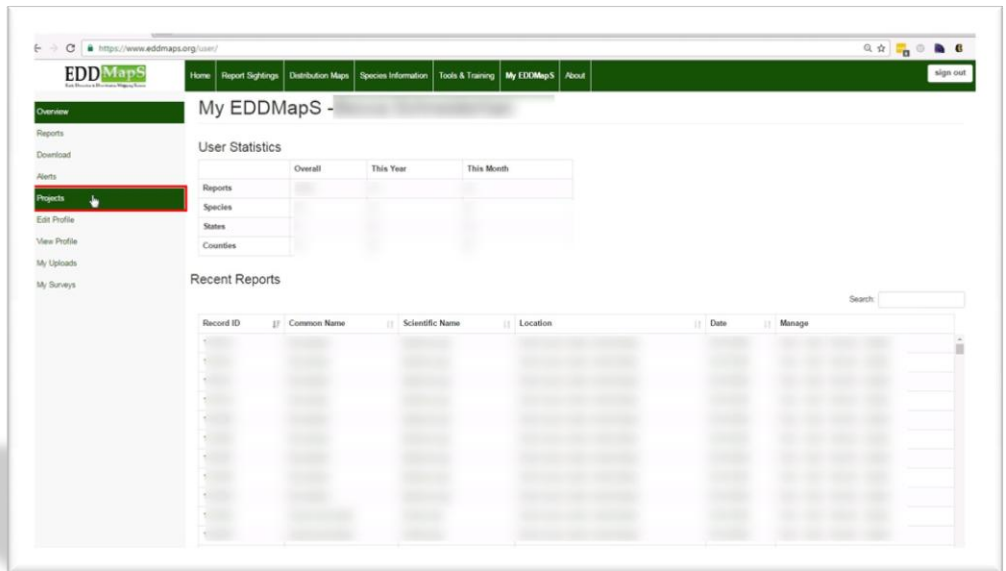
Enter in your EDDMapS user name and password.

*My
EDDMapS*



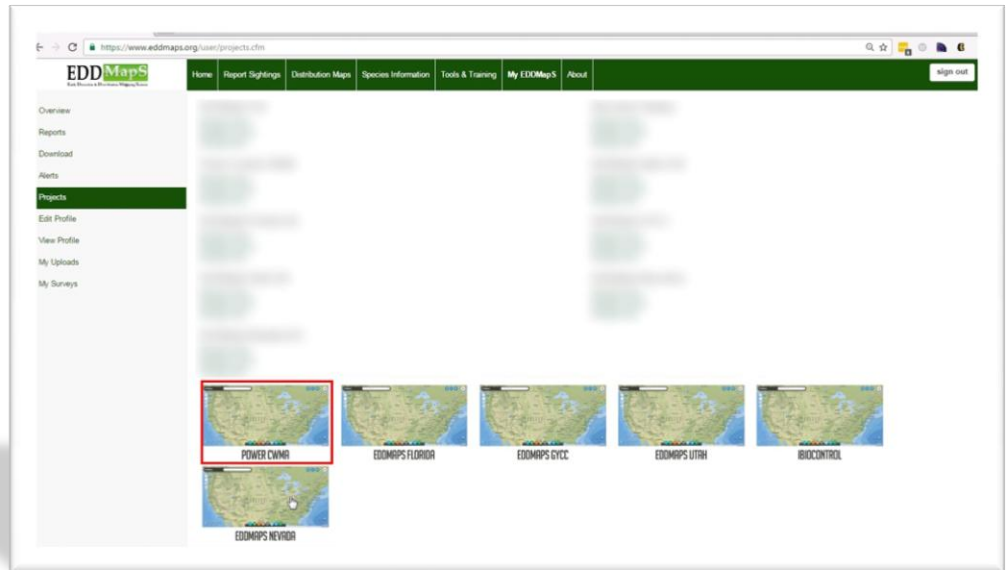
Click on "My EDDMAPS" in the top toolbar.

*My
EDDMapS*



Click on "Projects" in your left menu.

Projects

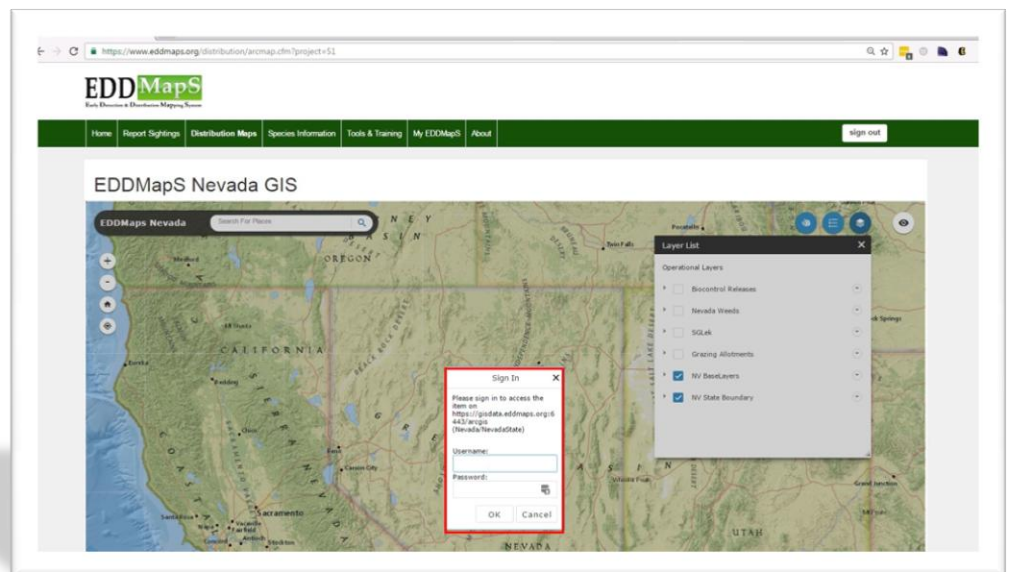


Whatever projects you have been *registered with will automatically show up here.

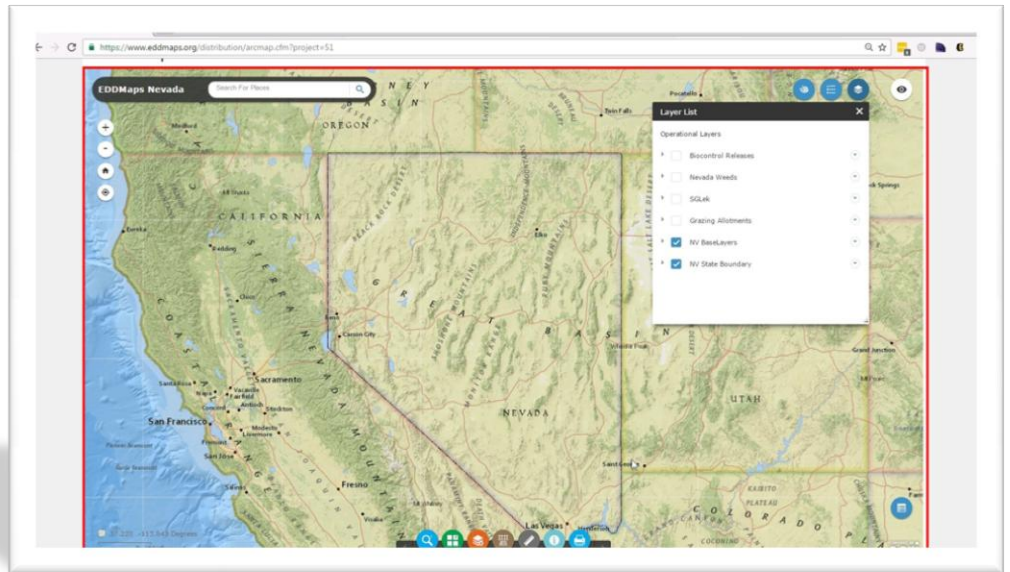
Click on the project thumbnail to open the GIS site.

*Contact the project manager if you need to get access to a GIS site.

GIS site



The GIS site opens up and you are prompted to enter in your user name and password.



You'll have full access to your project website and can take advantage of all of the tools and functionality.

Look through our other tutorials and guides on how to use each of the tools.